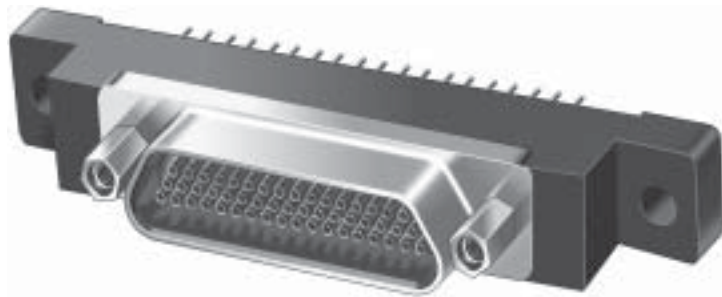


MIL-DTL-83513 - Vertical Mount, Printed Circuit Board Slash / 22 through 27

M83513 vertical mount printed circuit board connectors are potted with epoxy and are environmentally sealed. Available in eight contact arrangements, these connectors feature aluminum shells and fluorousilicone interfacial seals.

Contact terminals are spaced on .100 inch by .100 inch centers for easy board mounting.



Socket Connector Shown

RELATED INFORMATION

Performance Specifications	IBC*
Materials and Finishes	IBC*
Dimensions	B-11
PCB Mounting Layouts	Z-2,3

* Available on the Inside Back
Cover Fold-Out

HOW TO ORDER

Prefix	Slash Number - Insert Arrangement	Printed Circuit Tail Length	Shell Material/Finish	Jackpost Option
M83513/	22-A - Pin Connector, 9 contacts 22-B - Pin Connector, 15 contacts 22-C - Pin Connector, 21 contacts 22-D - Pin Connector, 25 contacts 22-E - Pin Connector, 31 contacts 22-F - Pin Connector, 37 contacts 23-G - Pin Connector, 51 contacts 24-H - Pin Connector, 100 contacts 25-A - Socket Connector, 9 contacts 25-B - Socket Connector, 15 contacts 25-C - Socket Connector, 21 contacts 25-D - Socket Connector, 25 contacts 25-E - Socket Connector, 31 contacts 25-F - Socket Connector, 37 contacts 26-G - Socket Connector, 51 contacts 27-H - Socket Connector, 100 contacts	01 - .109 inches 02 - .140 inches 03 - .172 inches	C - Aluminum, Cadmium Plating N - Aluminum, Electroless Nickel P - Stainless Steel, Passivated	N - No jackposts or threaded insert P - Jackpost attached T - Threaded insert W - Jackpost and threaded insert
Sample Part Number:				
M83513/	23-G	01	N	P

Metric dimensions (mm) are indicated in parentheses.

Glenair is Distributed by Air Electro Inc.